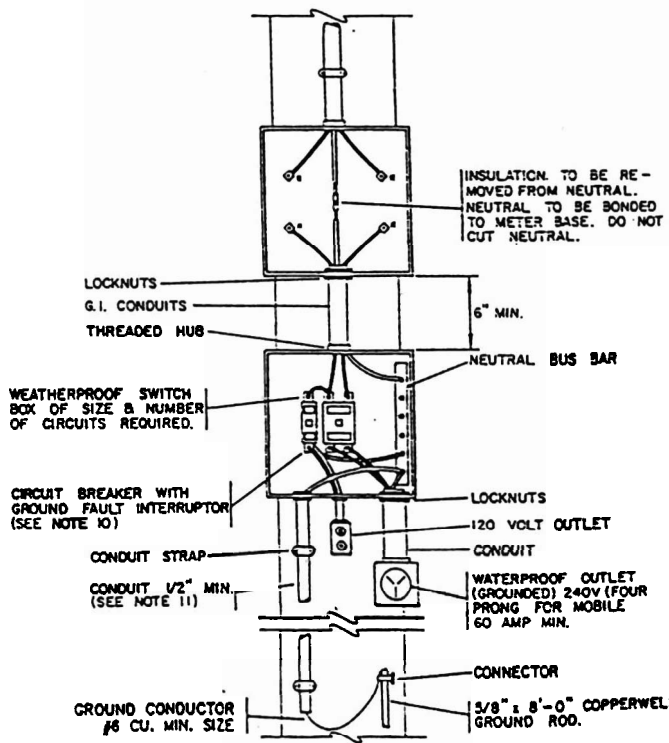


- A. Pole must be located such that service wire, when installed by cooperative, does not cross over mobile home.
- B. 100 AMP installation: 1 1/4" conduit & nipple, minimum #2 AWG copper conductor.
200 AMP installation: 2" conduit & nipple, minimum #3/0 AWG copper conductor.
- C. Pigtail must be factory trailer pigtail, or conductors must be in flexible conduit.
- D. Weatherproof main disconnect, furnished, installed, and maintained by member.

NOTES:

1. ALL MATERIAL, EXCEPT METER AND METER BASE, IS TO BE FURNISHED, INSTALLED, AND MAINTAINED BY THE MEMBER IN A LOCATION MUTUALLY ACCEPTABLE TO THE MEMBER AND THE COOPERATIVE.
2. THE METER BASE IS TO BE FURNISHED BY THE COOPERATIVE AND INSTALLED BY THE MEMBER.
3. THIS INSTALLATION MEETS THE COOPERATIVE MINIMUM STANDARDS. HOWEVER, WHERE IT IS IN CONFLICT WITH LOCAL, CITY OR COMMUNITY CODES, THEY SHALL GOVERN.
4. STRUCTURE SHALL WITHSTAND STRESSES OF SERVICE WIRES AND EQUIPMENT.
5. MINIMUM CLEARANCE OF 18' SHALL BE MAINTAINED OVER STREETS, ALLEYS AND AREAS ACCESSIBLE TO MOTOR VEHICLES. A MINIMUM OF 12' SHALL BE MAINTAINED OVER RESIDENTIAL DRIVEWAYS, SIDEWALKS AND LAWNS AND 22' OVER STATE HIGHWAYS.
6. SERVICE ENTRANCE CABLE MAY BE SUBSTITUTED FOR CONDUIT WHERE PERMITTED BY LOCAL CODE.
7. THE COOPERATIVE RESERVES THE RIGHT NOT TO CONNECT SERVICE IF COOP. REPRESENTATIVE CONSIDERS THE INSTALLATION UNSAFE.
8. SERVICE STRUCTURE SHALL BE WITHIN 75' OF THE COOP. POLE TO WHICH THE SERVICE IS TO BE CONNECTED.
9. CHECK WITH THE COOPERATIVE WAREHOUSE FOR HUB SIZE.
10. GROUND FAULT INTERRUPTORS REQUIRED ONLY FOR OUTSIDE RECEPTACLES, 15 AND 20 AMPERE 120 VOLT.
11. THE COOPERATIVE WILL INSTALL, OWN, AND MAINTAIN SERVICE AND SERVICE CONNECTORS.



SINGLE PHASE
 3 WIRE 120/240 V
 MOBILE HOME
 SERVICE INSTALLATION